

Desigo CC

Desigo TRA SSP EU Extension module

Software options, dynamic symbols

Key Words: TRA, symbols, libraries, Desigo CC, functions, room, segment, software option, floor monitoring

Document Type:	Technical Manual
Revision Date:	29.11.2016
EM Version:	2.5.0003.0
Author:	Spas Ormandzhiev
Company:	Siemens

Table of Contents

1. About this document	3
1.1. Purpose	3
1.2. Scope	3
2. Libraries version.....	3
3. Engineering workflow	4
4. Room (TRA) SSP EU library (BA_Room_TRA_101_ZN_1).....	8
4.1. Symbols.....	8
4.1.1. DYN_All_Room_Overview_All_001_101	8
4.1.2. DYN_2D_TRA_Room_Panel_Central_001_101	9
4.2. Software options	10
4.2.1. TRA_Floor_Monitoring_1_101	10
4.2.2. TRA_Floor_Monitoring_2_101	10
4.2.3. TRA_Floor_Monitoring_3_101	10
4.2.4. TRA_Floor_Monitoring_4_101	10
4.2.5. TRA_Floor_Monitoring_5_101	11
4.2.6. TRA_Floor_Monitoring_6_101	11
5. Room (TRA) SSP EU library (BA_Room_TRA_ZN_1)	11

1. About this document

1.1. Purpose

This document describes the content of the Room (TRA) SSP EU Library delivery for the Management Station. It helps Project Engineers and Graphics Engineers to get a quick overview of the available basic graphic elements, such as dynamic graphic symbols, functions and icons. It provides information about the available shapes and data point substitutions for dynamic symbols.

1.2. Scope

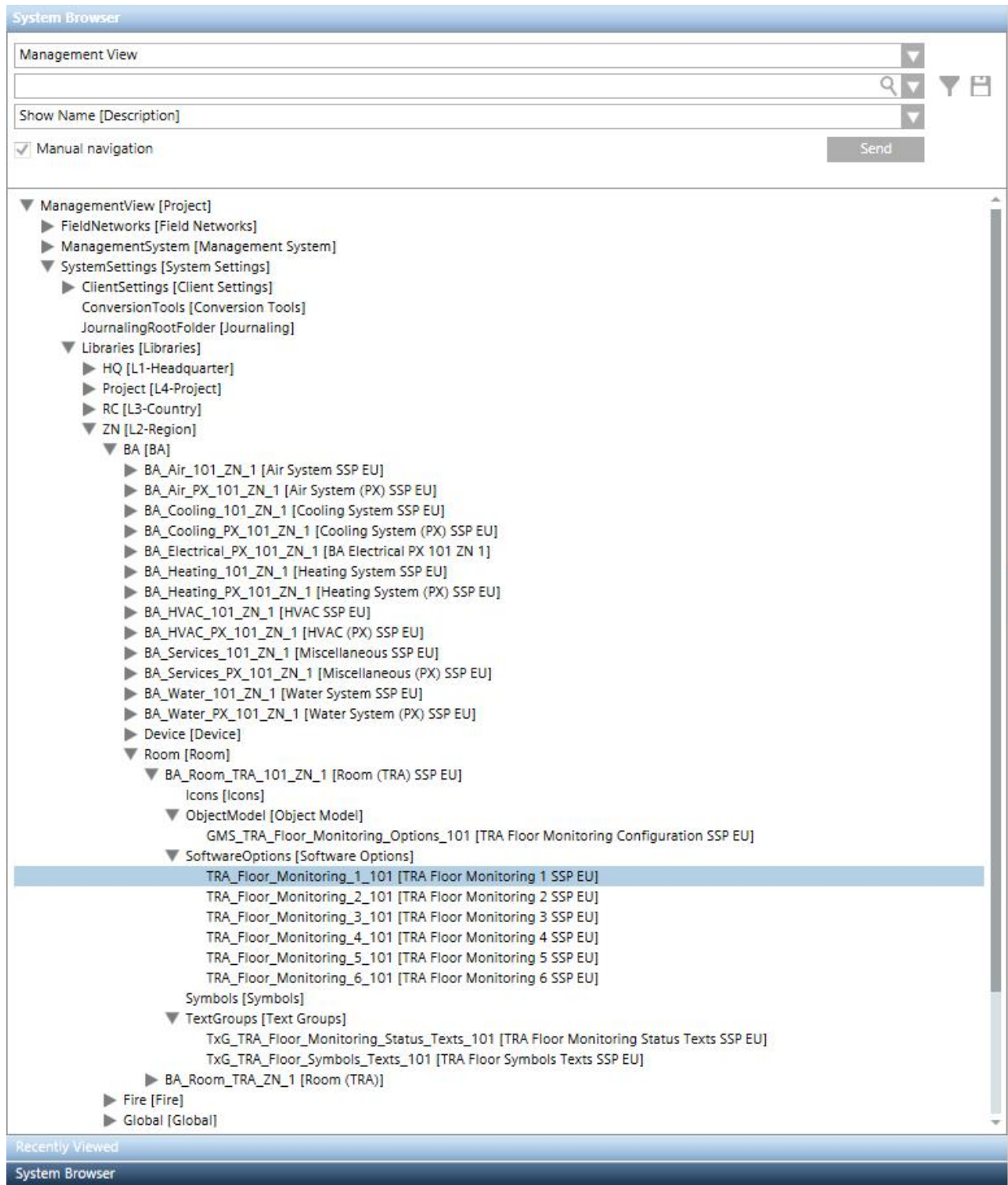
This document applies to the Desigo CC MP2.1 and Extension module “Desigo TRA SSP EU”

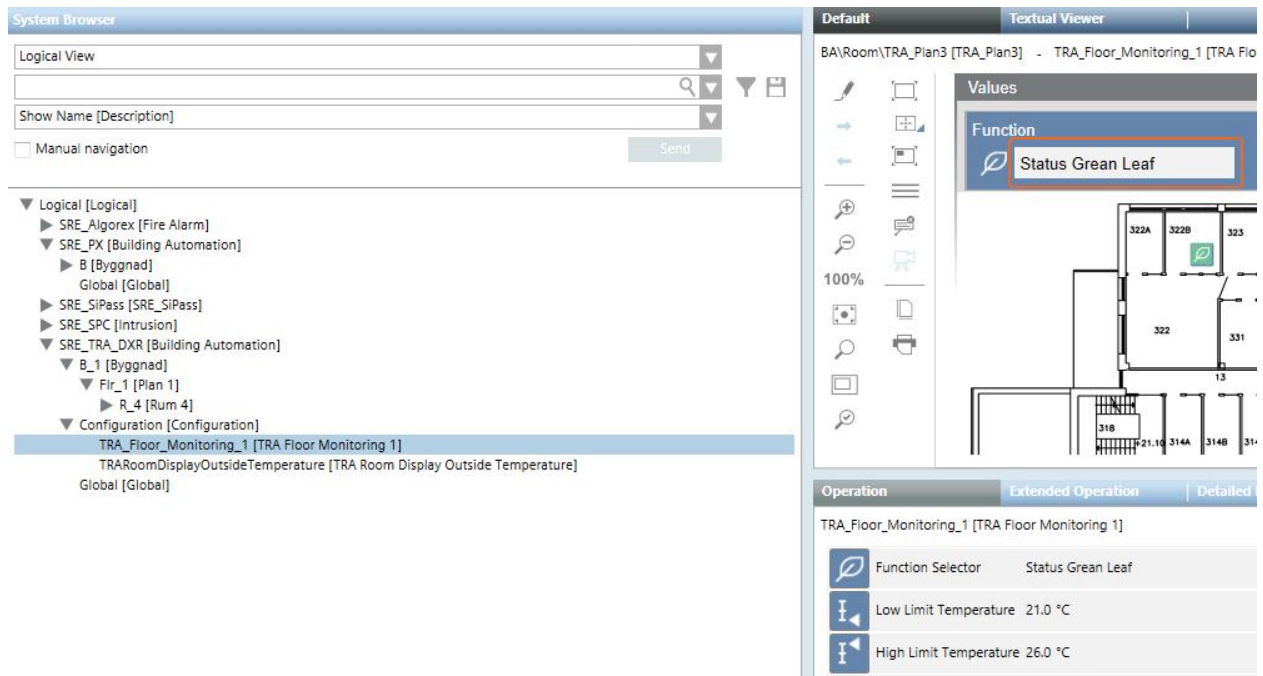
2. Libraries version

Description	Name	Version
Room (TRA) SSP EU library	BA_Room_TRA_101_ZN_1	1.1
Room (TRA) library	BA_Room_TRA_ZN_1	1.123

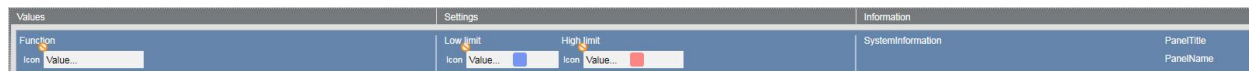
3. Engineering workflow

In zoomed out mode the visualization of the properties on the floor plan graphic is controlled by a software option. The software option should be linked into the logical view from the library.





By dragging out the software option into a graphical page, the symbol for the software option populates the page. The symbol (page bar) harmonizes with the rest of the SSP EU page bars. It is compatible with the default graphic page 1600x700.



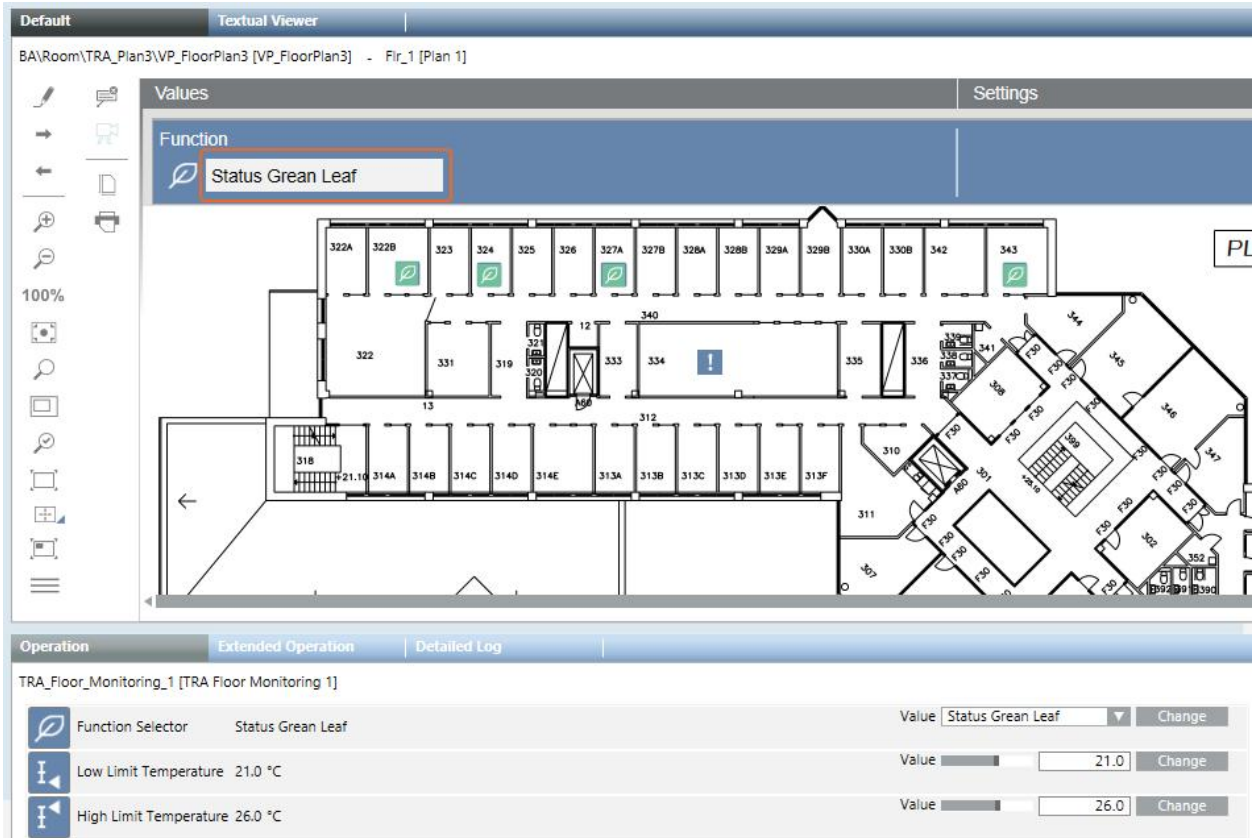
In zoomed out mode (267% or less on the 1600x700 graphic page) is used the software option. When the symbol's Function tab is selected, in the Operation tab, in the Contextual pane, one of the following options could be chosen, using the Function Selector property:

- Status Green Leaf
- Status Heating/Cooling
- Status Operating Mode
- Status Presence
- Status Room Window
- Status Temperature

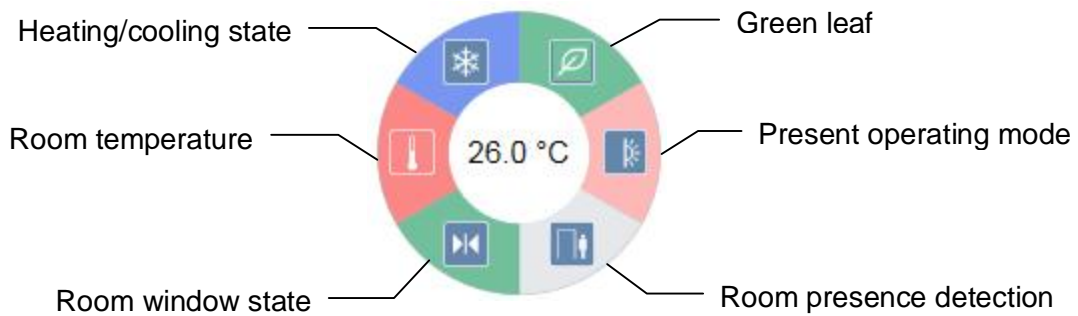
By dragging out the room node from Logical View of the System Browser into a graphical page, the symbol containing the essential properties for that room populates the page. The link to the software option should be added in the substitution tab manually by the graphics engineer.

Depending on the option selected in the Function Selector, the symbol visualizes one of the following properties from TRA:

- Green leaf
- Heating/cooling state
- Room operating mode
- Room presence
- Room windows state
- Temperature



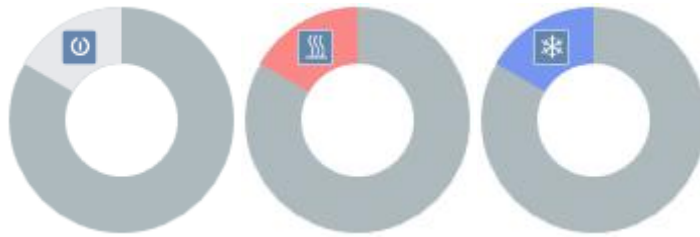
In zoomed in mode (267% or more on the 1600x700 graphic page) the symbol shows all the properties visible, both as a dynamic symbol and with color status.



Status Green Leaf symbol and color codes:



Status Heating/Cooling symbol and color codes:

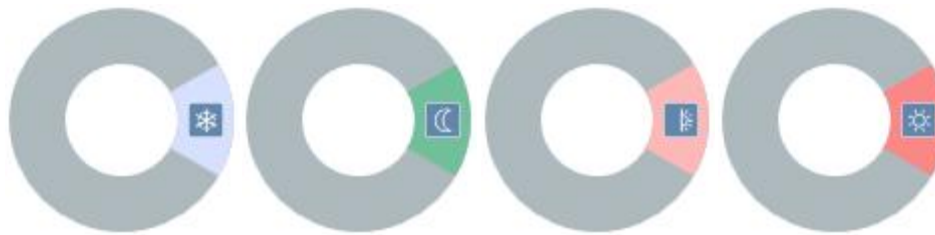


1-Neither

2-Heating

3-Cooling

Status Operating Mode symbol and color codes:



1-Protection

2-Economy

3-Pre-Comfort

4-Comfort

Status Presence symbol and color codes:



0-Absent

1-Present

Status Room Window symbol and color codes:



0-Closed

1-Opened

Status Temperature symbol and color codes:



Temperature below the low limit

Temperature within the limits

Temperature above the high limit

The High Limit Temperature and the Low Limit Temperature are adjustable from the function's operation tab.

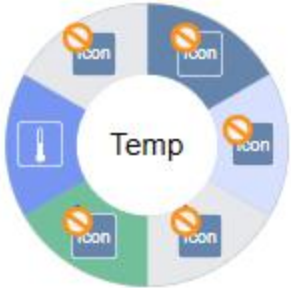
4. Room (TRA) SSP EU library (BA_Room_TRA_101_ZN_1)

4.1. Symbols

4.1.1. DYN_All_Room_Overview_All_001_101

Symbol Name			
DYN_All_Room_Overview_All_001_101			
Library			
BA_Room_TRA_101_ZN_1			
Description			
Room	Overview	All	
Symbol			
Remarks:			
Room overview bar for room graphics pages.			
All texts in the bar are localized (translated text), language will depend on the current user.			
Substitutions		Set of Values	
PanelName		Name of the panel	
PanelTitle		Panel title	
SystemInformation		Information about the system	
SystemInfoVisible		0=Hidden 1=Visible	

4.1.2. DYN_2D_TRA_Room_Panel_Central_001_101

Symbol Name			
DYN_2D_TRA_Room_Panel_Central_001_101			
Library			
BA_Room_TRA_101_ZN_1			
Description			
TRA Room Information	Room Panel	Central	
Symbol			
			
Substitutions		Set of Values	
*TRARoom		Dynamic symbol for TRA room information.	
TRAConfig		The link to the software option should be added in the tab manually by the graphics engineer	

4.2. Software options

4.2.1. TRA_Floor_Monitoring_1_101

This software option should be linked into the logical view from the library (see the engineering workflow from above for more details). It is preprogrammed to populate on the graphic page with preselected option Status Green Leaf. The rest of the options could be selected in the Operation tab, in the Contextual pane using the Function Selector property.

The graphic symbol is DYN_All_Room_Overview_All_001_101



4.2.2. TRA_Floor_Monitoring_2_101

This software option should be linked into the logical view from the library (see the engineering workflow from above for more details). It is preprogrammed to populate on the graphic page with preselected option Status Heating/Cooling. The rest of the options could be selected in the Operation tab, in the Contextual pane using the Function Selector property.

The graphic symbol is DYN_All_Room_Overview_All_001_101



4.2.3. TRA_Floor_Monitoring_3_101

This software option should be linked into the logical view from the library (see the engineering workflow from above for more details). It is preprogrammed to populate on the graphic page with preselected option Status Operating Mode. The rest of the options could be selected in the Operation tab, in the Contextual pane using the Function Selector property.

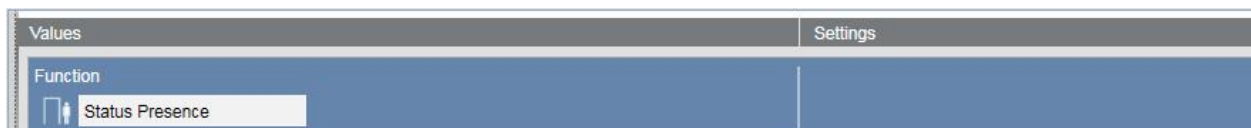
The graphic symbol is DYN_All_Room_Overview_All_001_101



4.2.4. TRA_Floor_Monitoring_4_101

This software option should be linked into the logical view from the library (see the engineering workflow from above for more details). It is preprogrammed to populate on the graphic page with preselected option Status Presence. The rest of the options could be selected in the Operation tab, in the Contextual pane using the Function Selector property.

The graphic symbol is DYN_All_Room_Overview_All_001_101



4.2.5. TRA_Floor_Monitoring_5_101

This software option should be linked into the logical view from the library (see the engineering workflow from above for more details). It is preprogrammed to populate on the graphic page with preselected option Status Room Window. The rest of the options could be selected in the Operation tab, in the Contextual pane using the Function Selector property.

The graphic symbol is DYN_All_Room_Overview_All_001_101



4.2.6. TRA_Floor_Monitoring_6_101

This software option should be linked into the logical view from the library (see the engineering workflow from above for more details). It is preprogrammed to populate on the graphic page with preselected option Status Green Leaf. The rest of the options could be selected in the Operation tab, in the Contextual pane using the Function Selector property.

The graphic symbol is DYN_All_Room_Overview_All_001_101



5. Room (TRA) SSP EU library (BA_Room_TRA_ZN_1)

This library depends on the Room (TRA) (BA_Room_TRA_HQ_1_123) and on the Room (TRA) (BA_Room_TRA_101_ZN_1_0) libraries. It is customized from the HQ library BA_Room_TRA_HQ_1 and it contains the customized functions for the TRA rooms for the following applications:

- RoomTRAHvac11
- RoomTRAHvac12
- RoomTRAHvac13

The customization affects only the default symbol in the functions so if room node from the System Browser is dragged to the graphic page in style "Any" it will populate the page with the symbol:

DYN_2D_TRA_Room_Panel_Central_001_101

